



Allegheny County Health Department

LuAnn Brink, PhD, MPH

**Deputy Director
lbrink@achd.net**



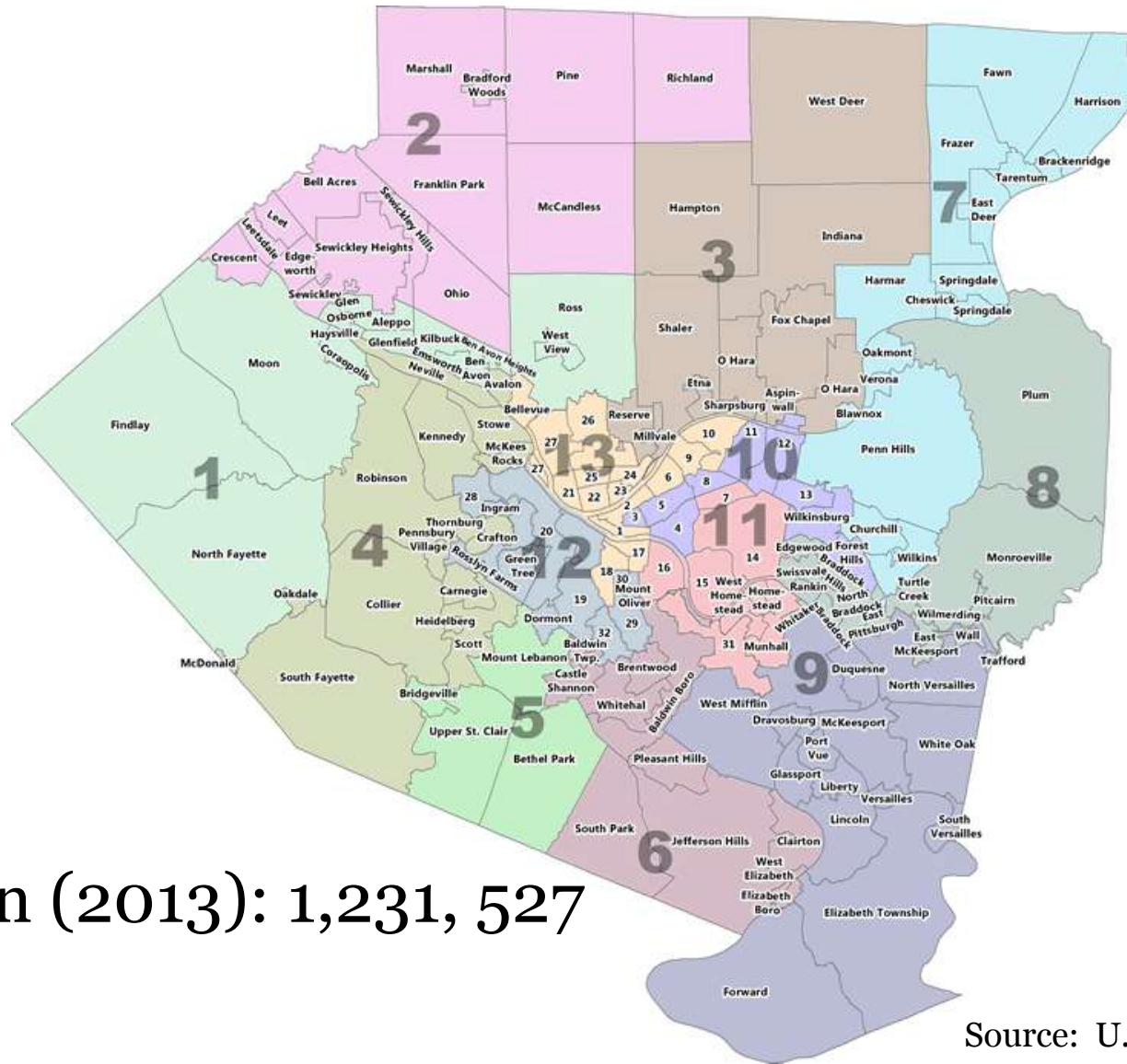
October 1, 2015



Demographics and Vital Statistics



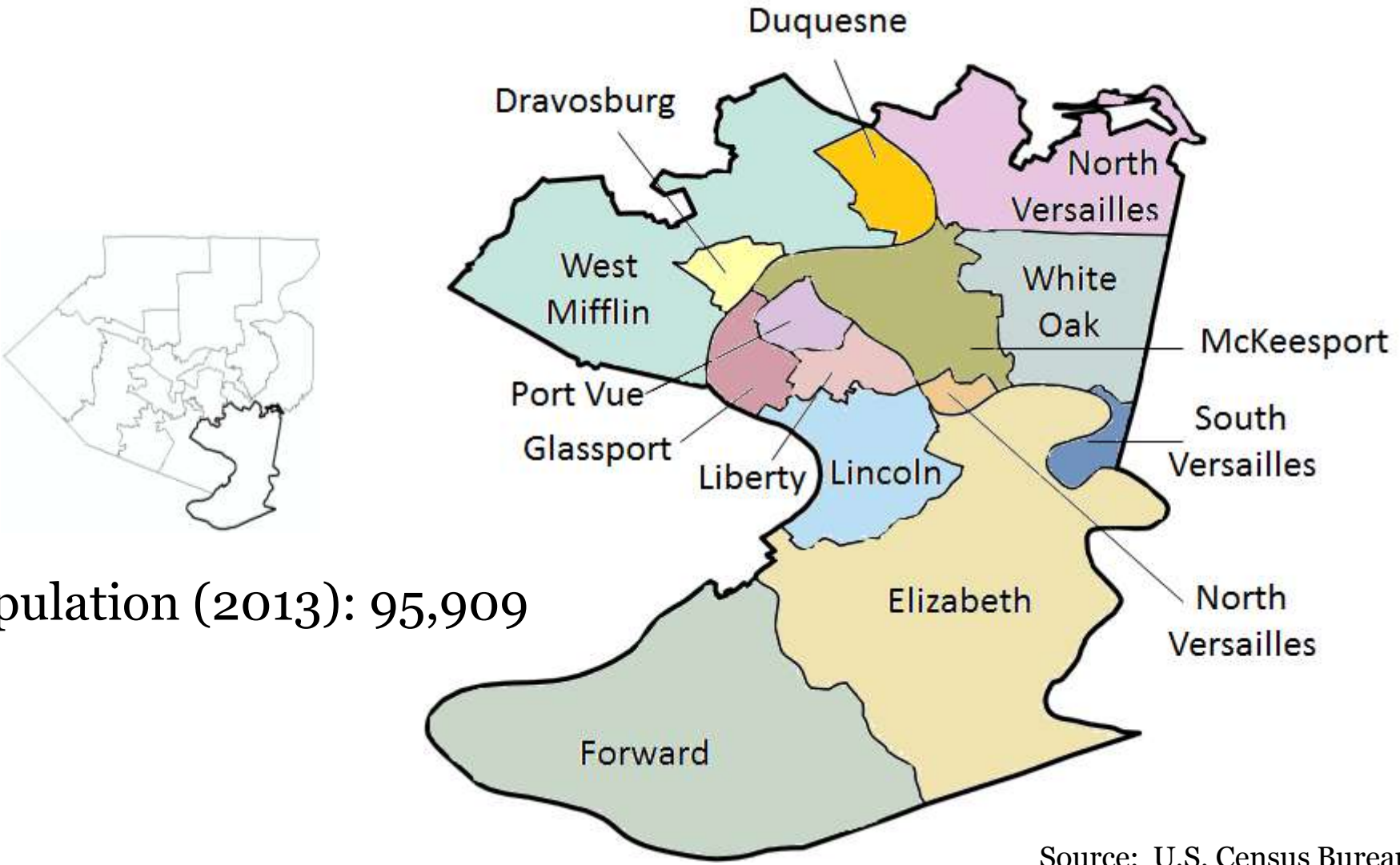
Allegheny County



Population (2013): 1,231, 527

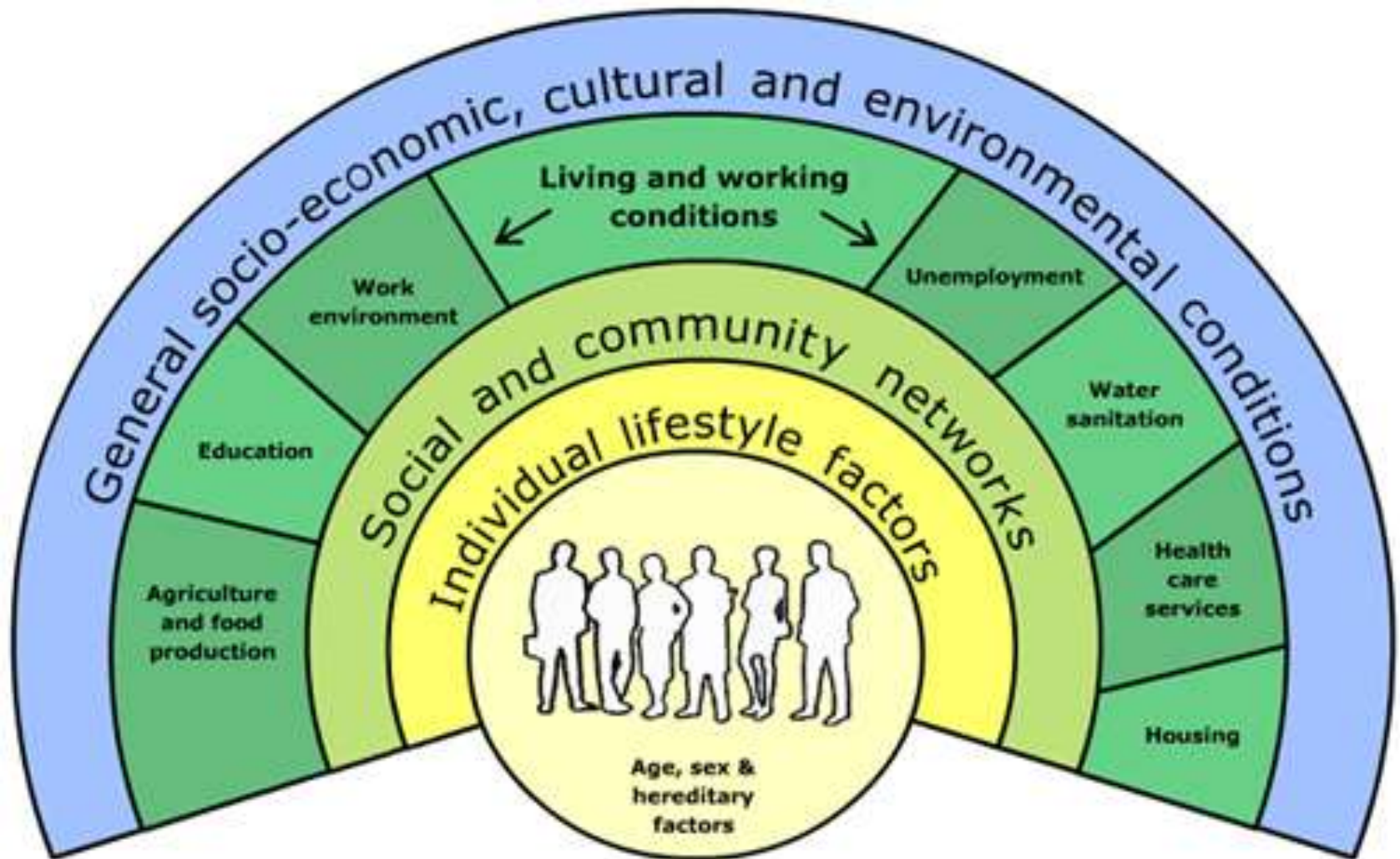


District 9



Population (2013): 95,909

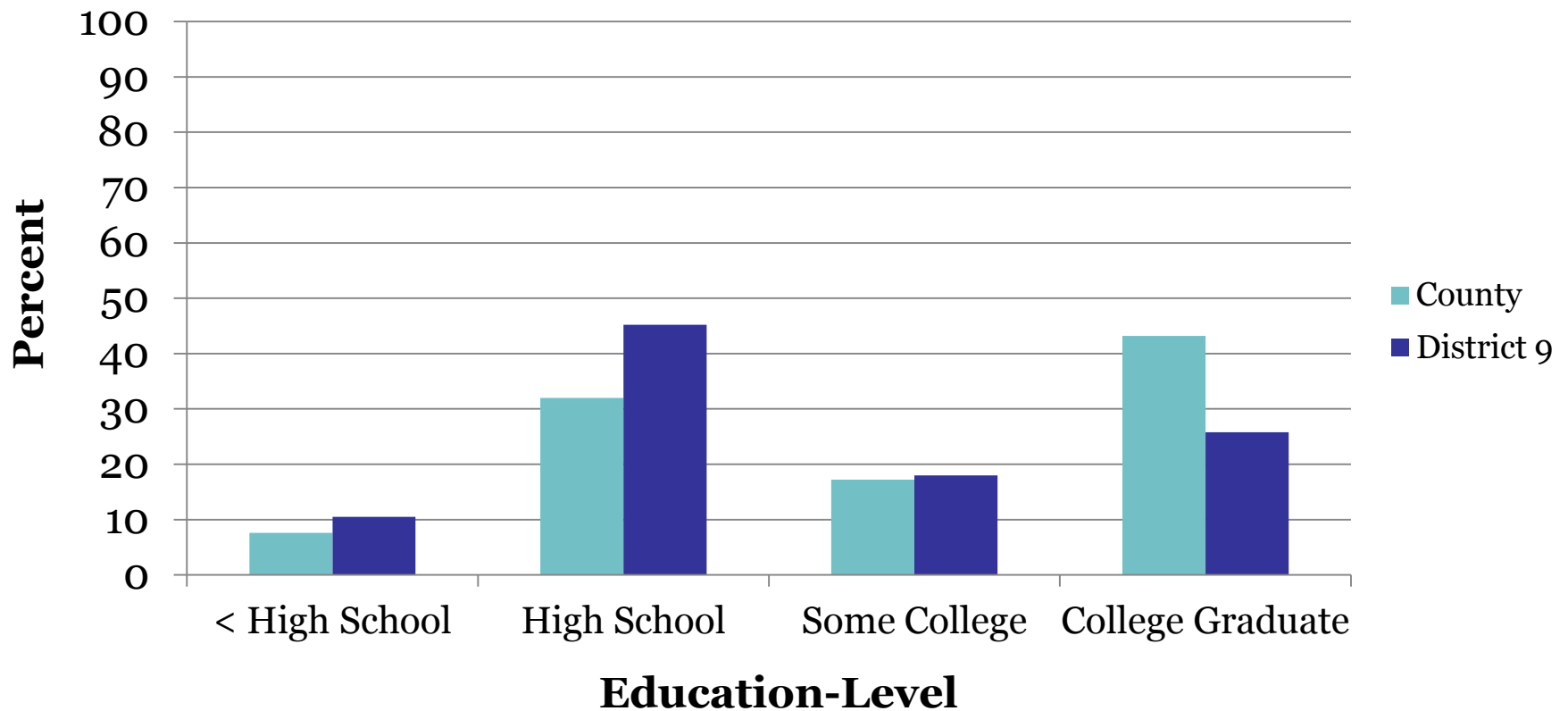
Social Determinants of Health



Source: Dahlgren & Whitehead 1991 Policies and strategies to promote social equity in health.

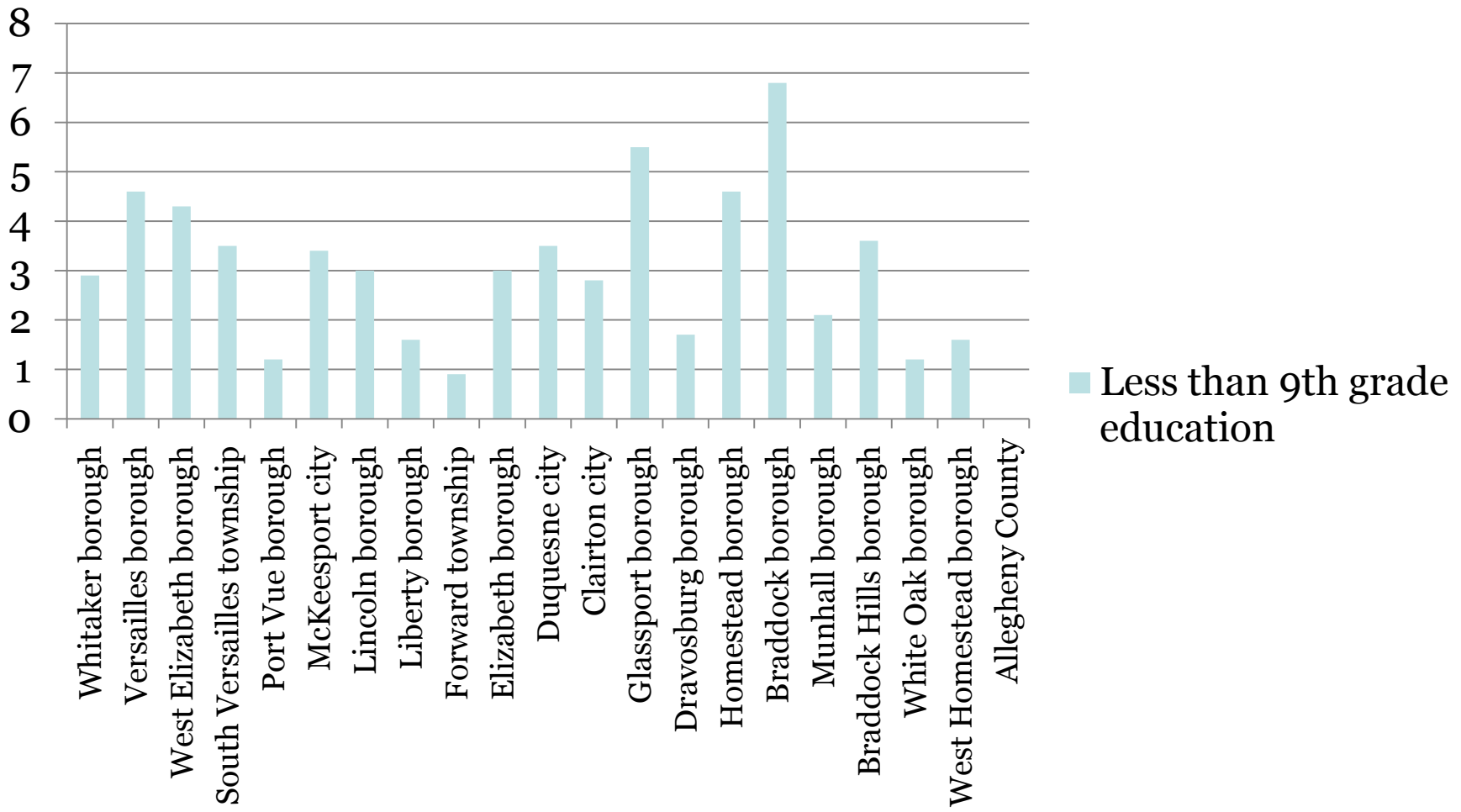


Education Distribution by County and District, 2013



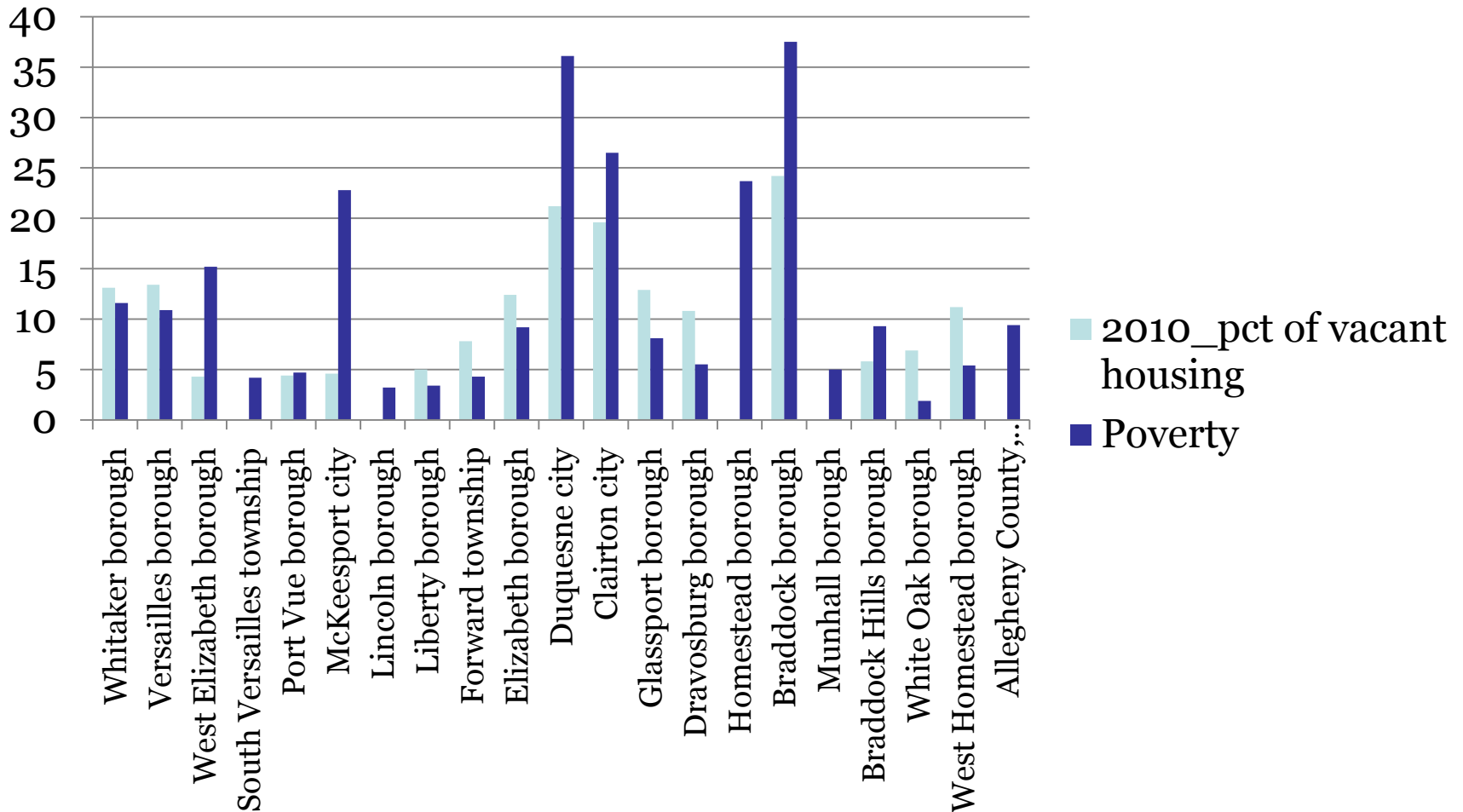
Education by Municipality in the Mon Valley

Less than 9th grade education



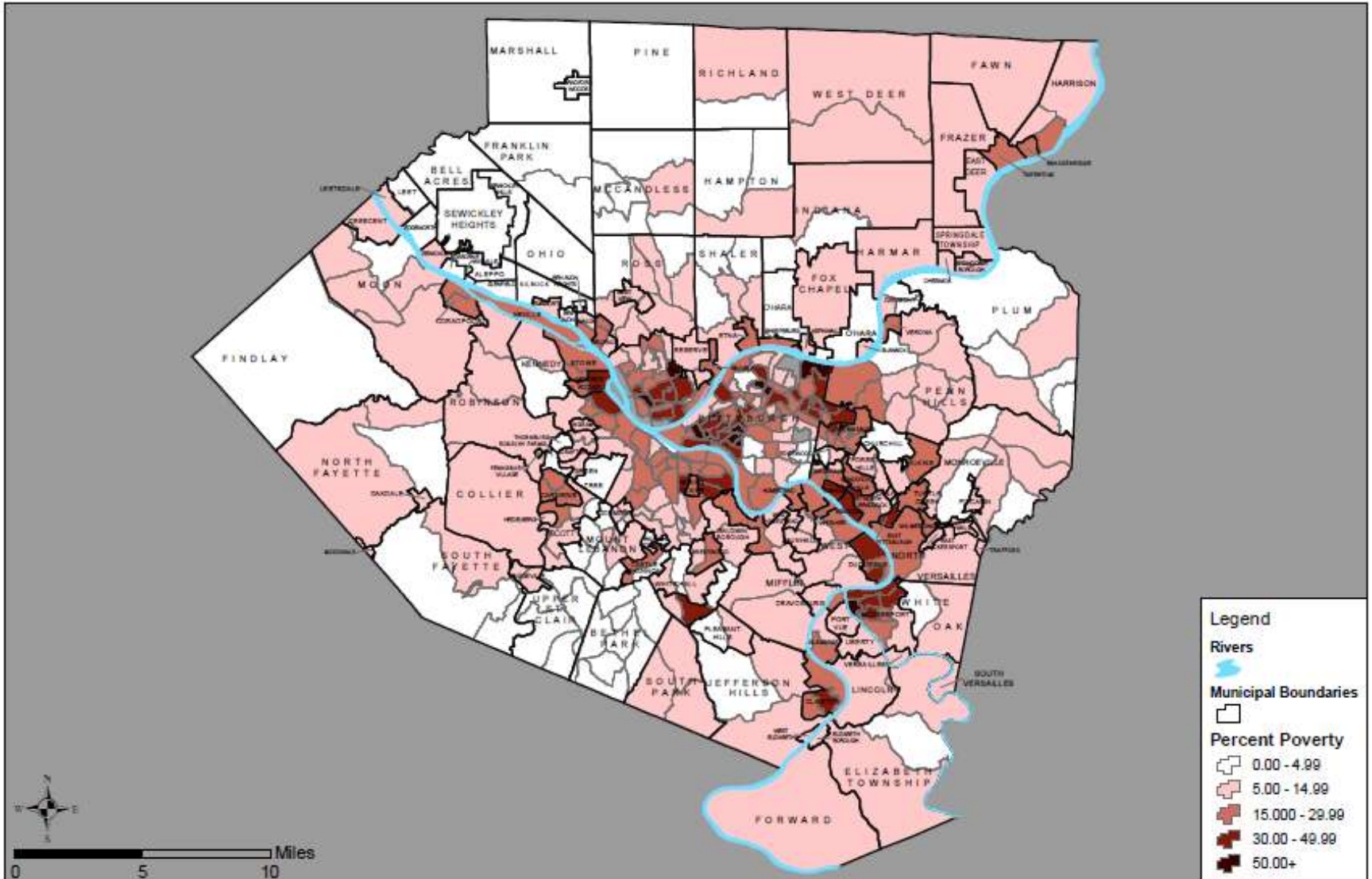


Vacant homes and poverty by Municipality in the Mon Valley





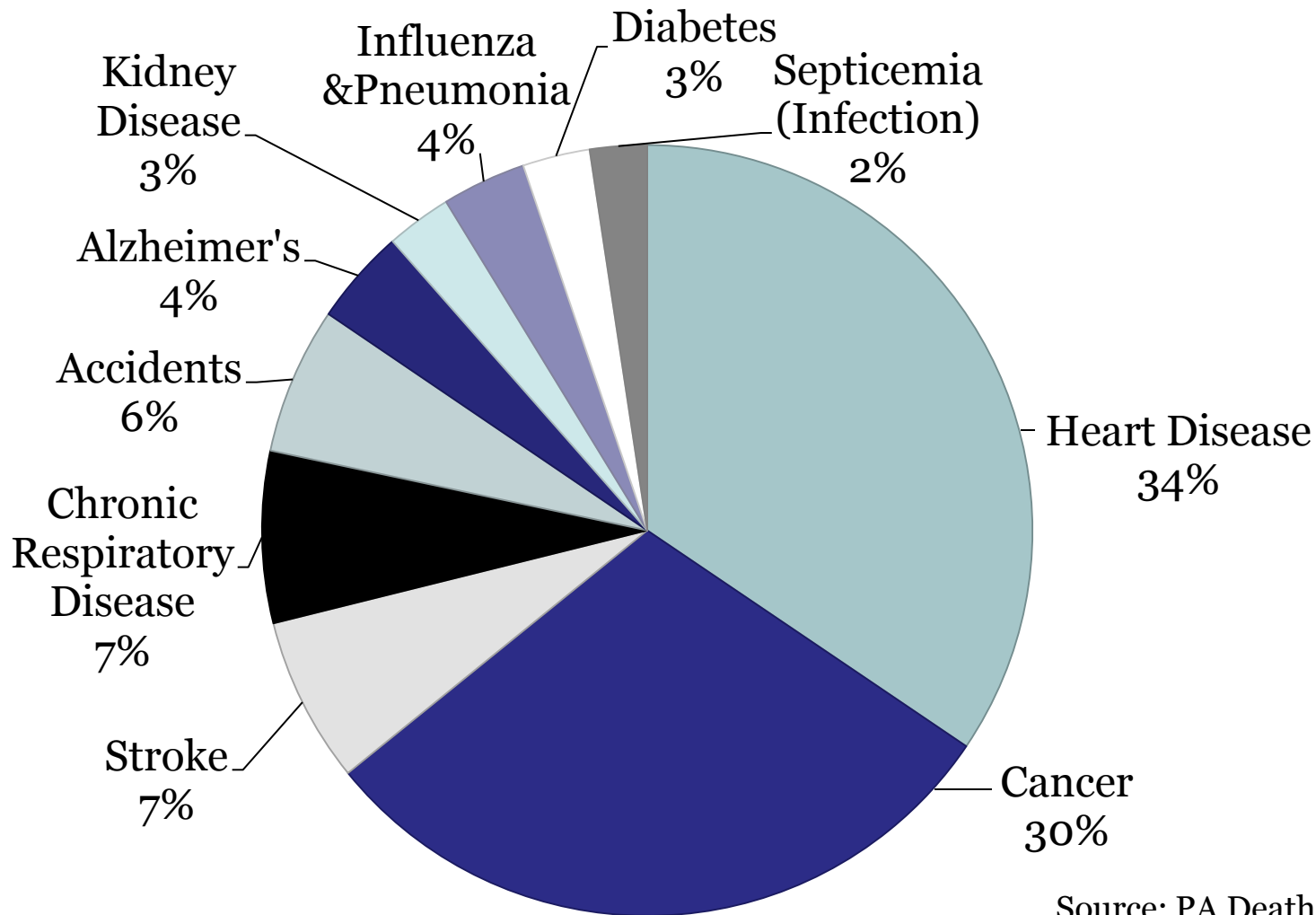
Percent Below Poverty Level in Allegheny County, 2012



Source: US Census Bureau



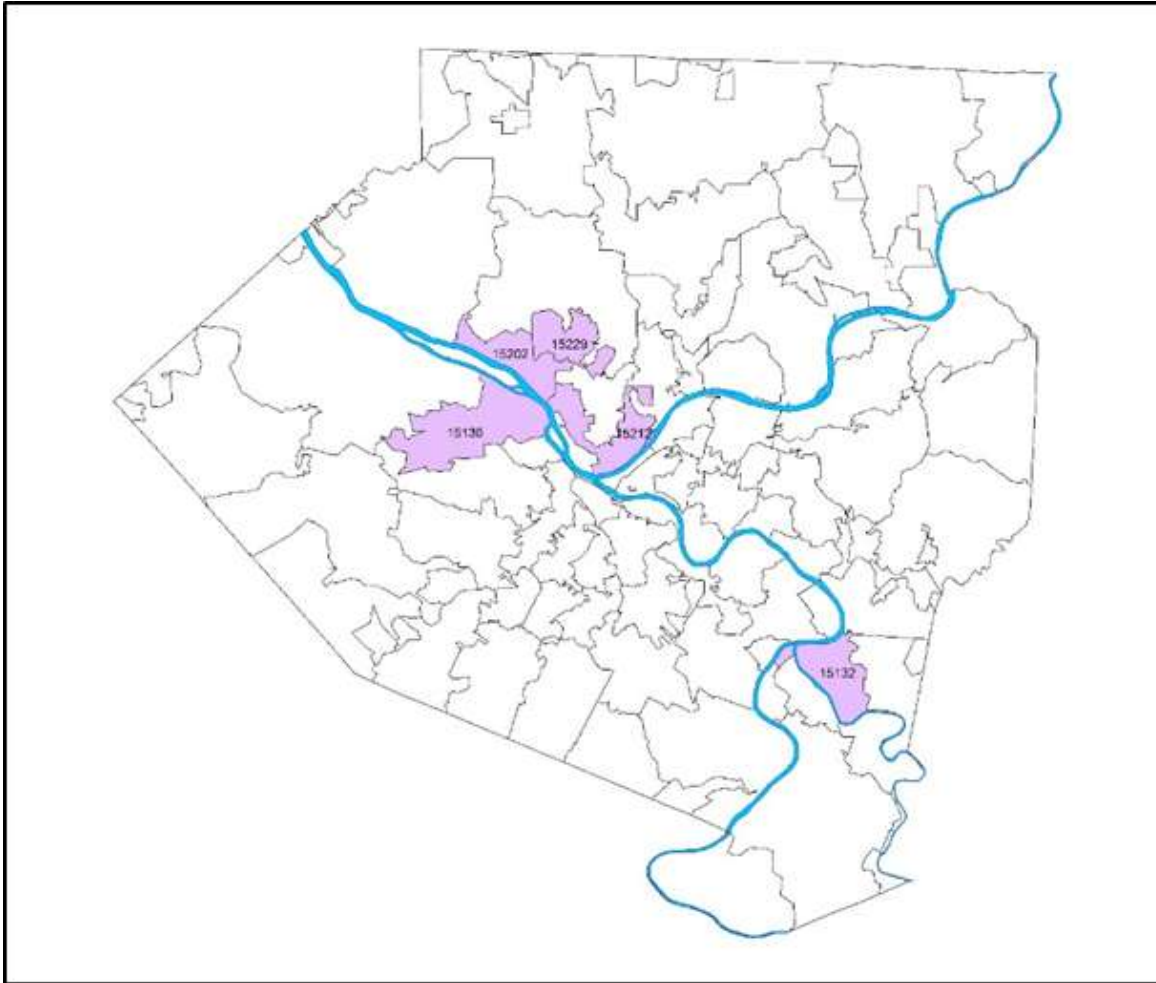
Leading Causes of Death in Allegheny County, 2011



Source: PA Death Certificates



Cardiovascular Mortality



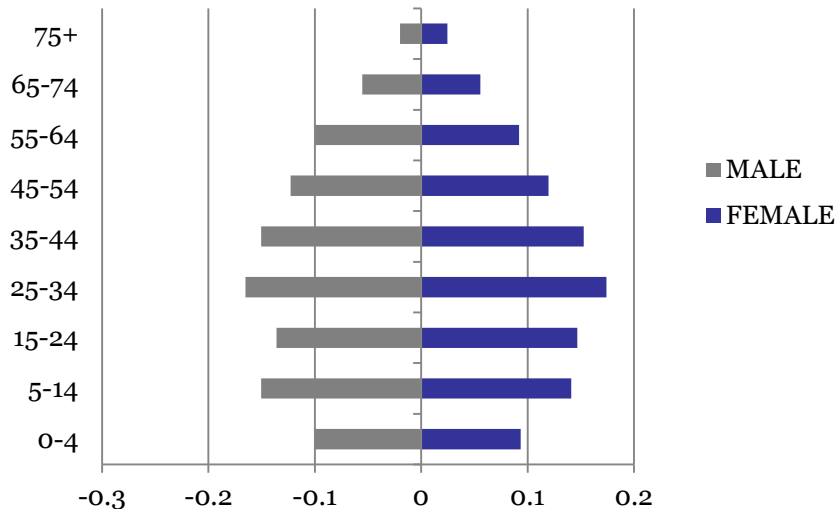
Cardiovascular mortality rates were constantly higher than 75 percent of the rest of the zip codes in Allegheny County across the entire 2000 through 2009 timeframe.



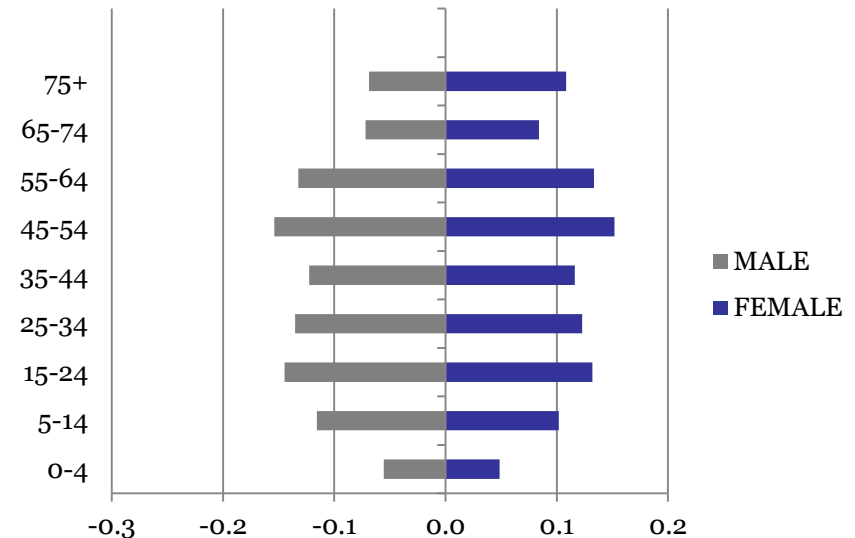
Age-Adjustment

Age-adjustment neutralizes the differences in the age structure when comparing different populations over time and geography, or between race and sex. Age-adjusted rates are only meaningful when compared to other similarly calculated rates.

**Allegheny County
Population Pyramid
1950**



**Allegheny county
Population Pyramid
2010**



Allegheny County Age-Adjusted Death Rate for All Causes by District, 2007-2011

	Number of Deaths	Rate per 100,000 Residents
Allegheny County	68,153	787.6
District 1	4,658	705.4
District 2	3,564	634.1
District 3	4,832	690.7
District 4	5,758	781.1
District 5	4,880	638.2
District 6	5,581	752.9
District 7	6,329	885.1
District 8	5,438	764.9
District 9	6,814	902.9
District 10	4,982	932.3
District 11	4,695	792.3
District 12	5,577	910.1
District 13	4,955	988.5

Source: Pennsylvania Death Certificates

Allegheny County Median Age of Death by District, 2011

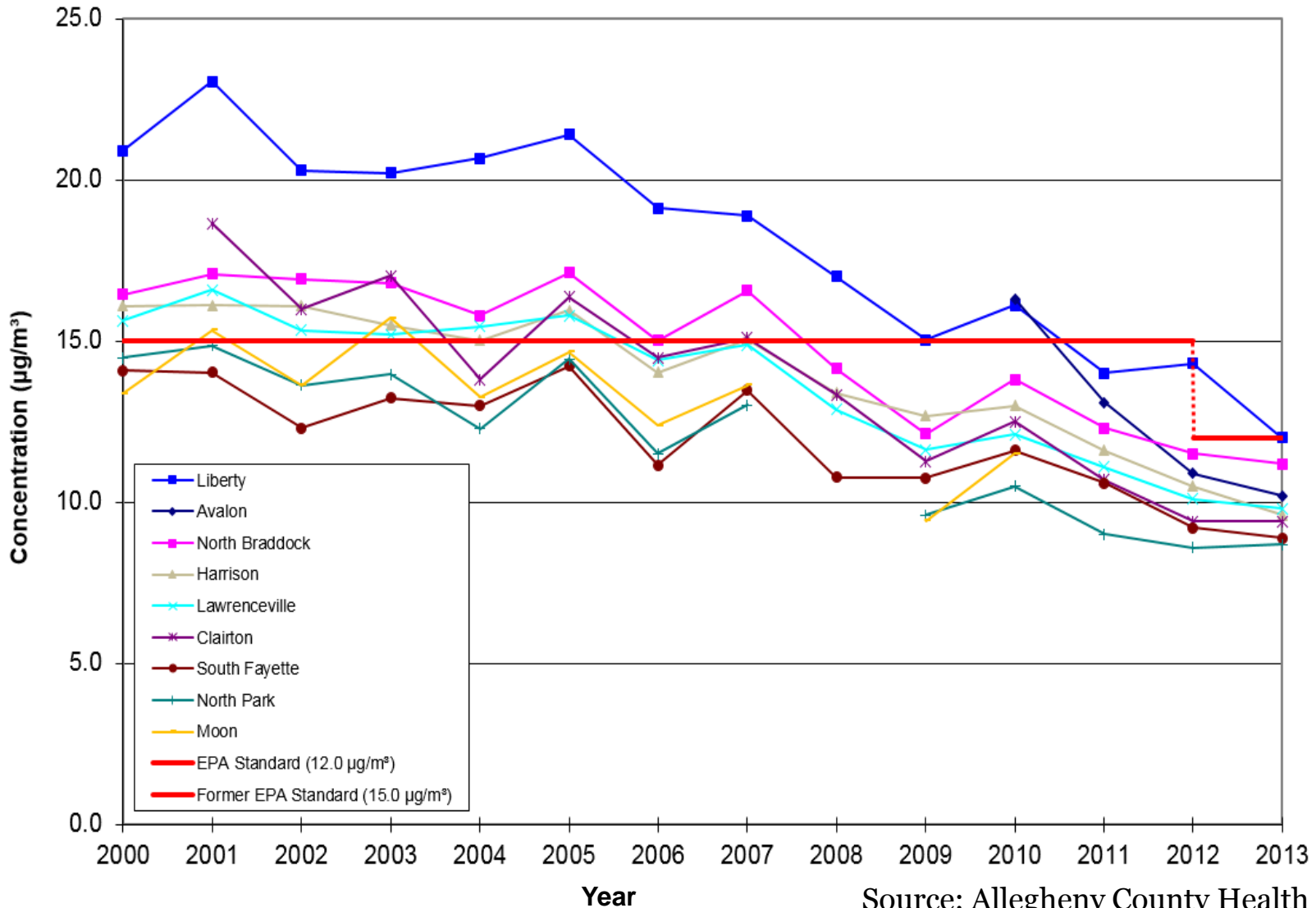
	Total Number of Deaths	White	Black
Allegheny County	13,690	77.9	66.9
District 1	985	77.8	77.1
District 2	775	79.0	78.0
District 3	1,015	77.8	57.5
District 4	1,156	77.5	60.0
District 5	973	85.1	75.0
District 6	1,162	78.1	66.0
District 7	1,241	78.2	67.5
District 8	1,077	78.0	65.3
District 9	1,352	77.2	66.0
District 10	910	78.5	75.1
District 11	949	77.8	68.2
District 12	1,108	76.6	57.8
District 13	968	76.5	65.8

Source: Pennsylvania Death Certificates



Allegheny County Air Quality

PM_{2.5} Annual Averages by Year, 2000 to 2013



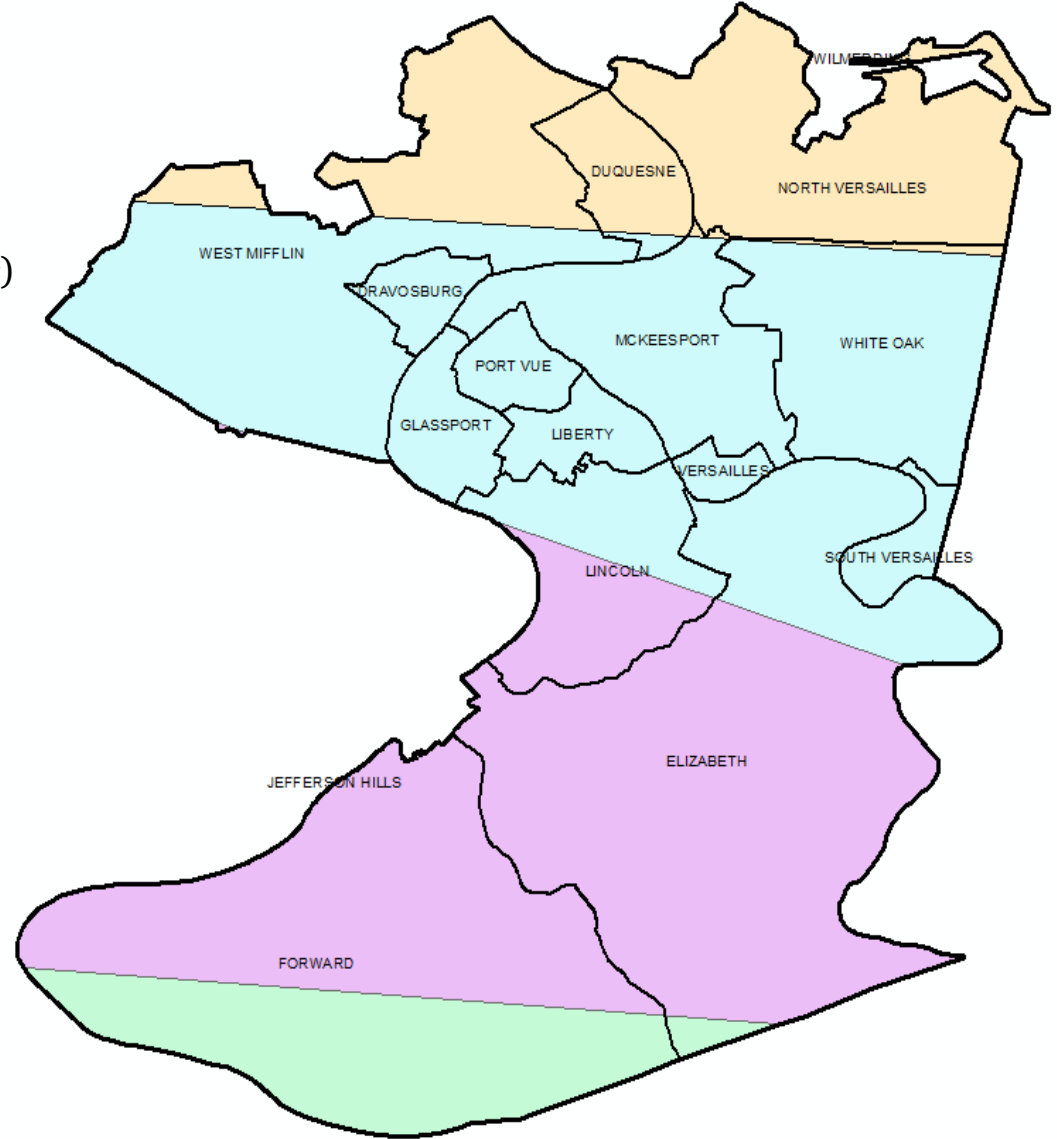
Source: Allegheny County Health Department



District 9 Particulate Matter Levels, 2013

- 11.2 $\mu\text{g}/\text{m}^3$ (North Braddock monitor)
- 12.0 $\mu\text{g}/\text{m}^3$ (Liberty monitor)
- 9.4 $\mu\text{g}/\text{m}^3$ (Clairton monitor)
- 10.6 $\mu\text{g}/\text{m}^3$ (Charleroi monitor)

Weighted Annual Arithmetic Mean (2013)

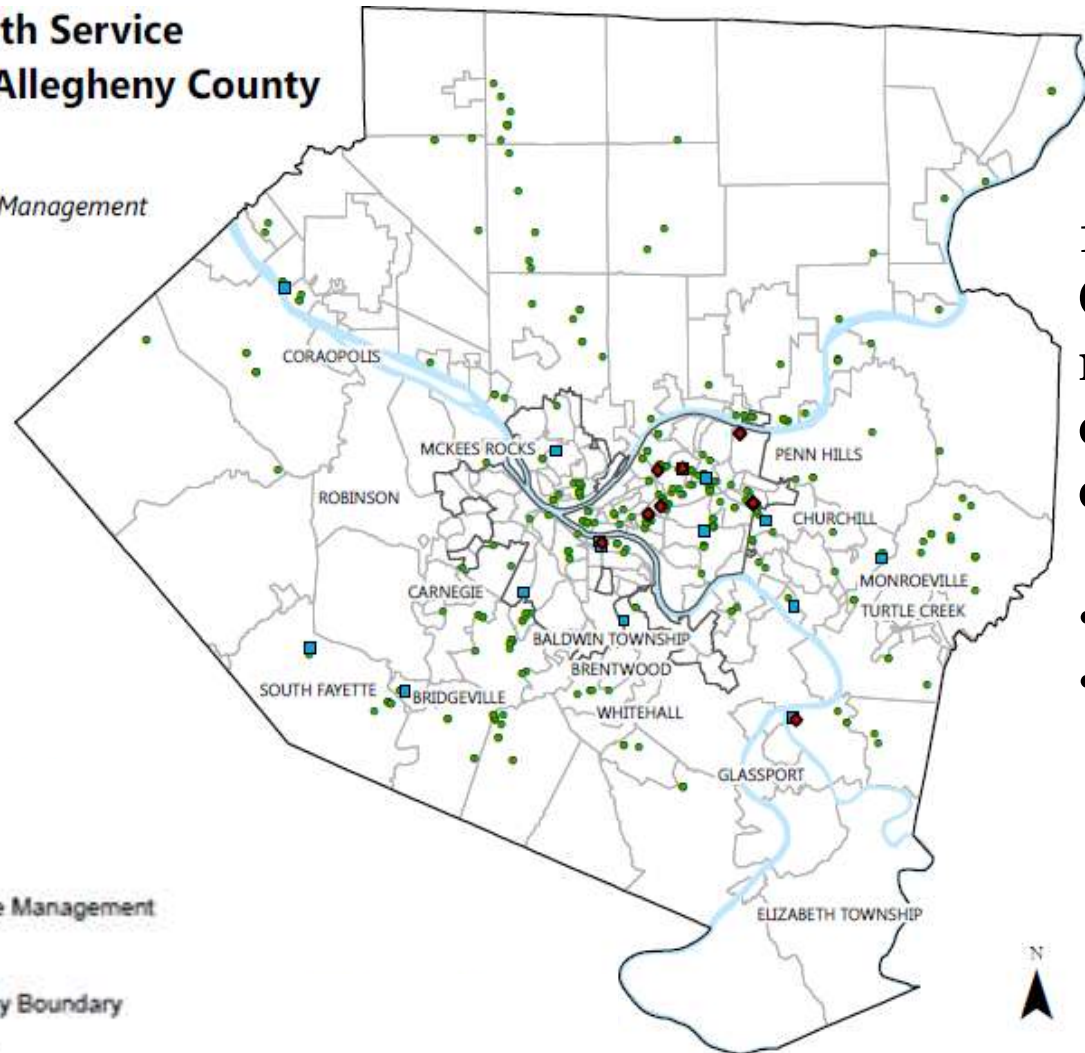




Access to Mental Health Care in Allegheny County

Mental Health Service Facilities in Allegheny County

Crisis, Outpatient, and Administrative Management facility locations



18.2% of Allegheny County residents reported being diagnosed with a form of depression.

- PA: 18.0%
- US: 17.6%

Legend

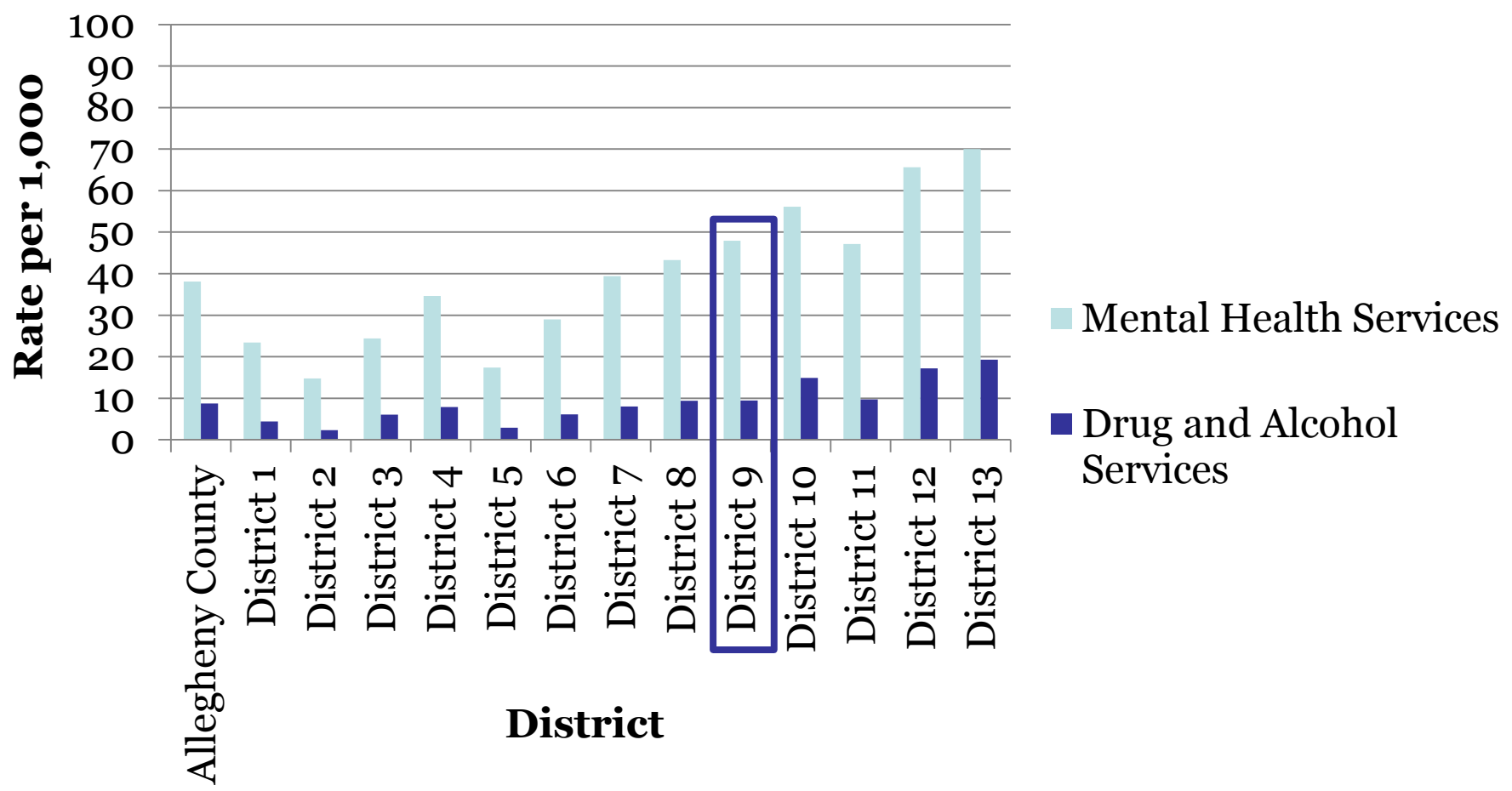
- ◆ Crisis
- Administrative Management
- Outpatient
- ▭ Pittsburgh City Boundary
- ▭ Major Rivers
- ▭ Municipality/Neighborhood Boundaries

Sources: Allegheny County Health Survey, 2009-2010
Department of Human Services



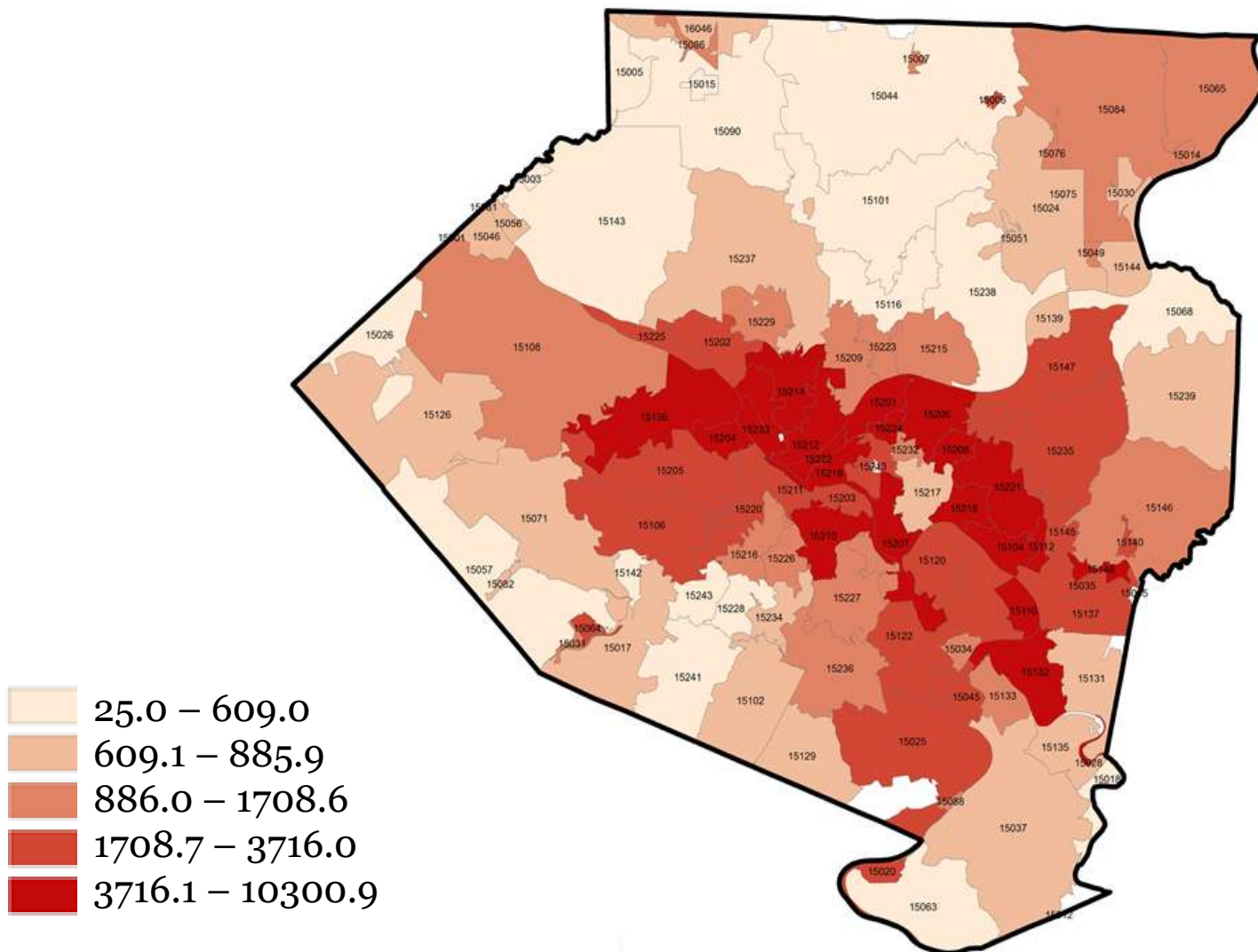
Utilization of Mental Health Services in Allegheny County by District

MH Service Rates per 1000 Residents by District, 2013





Chlamydia Rates per 100,000 in Allegheny County by Zip Code, 2009-2012

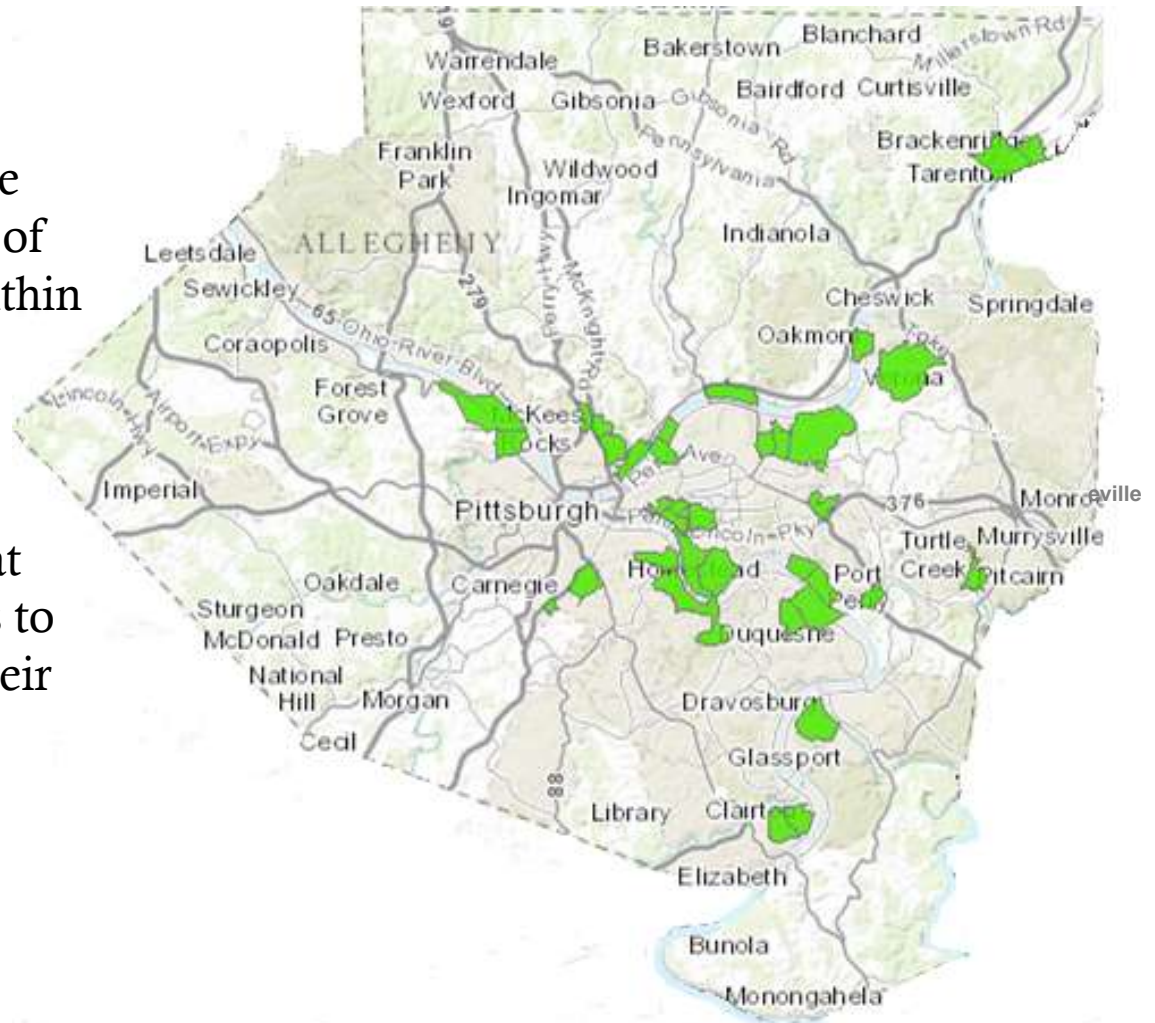




Food Deserts in Allegheny County

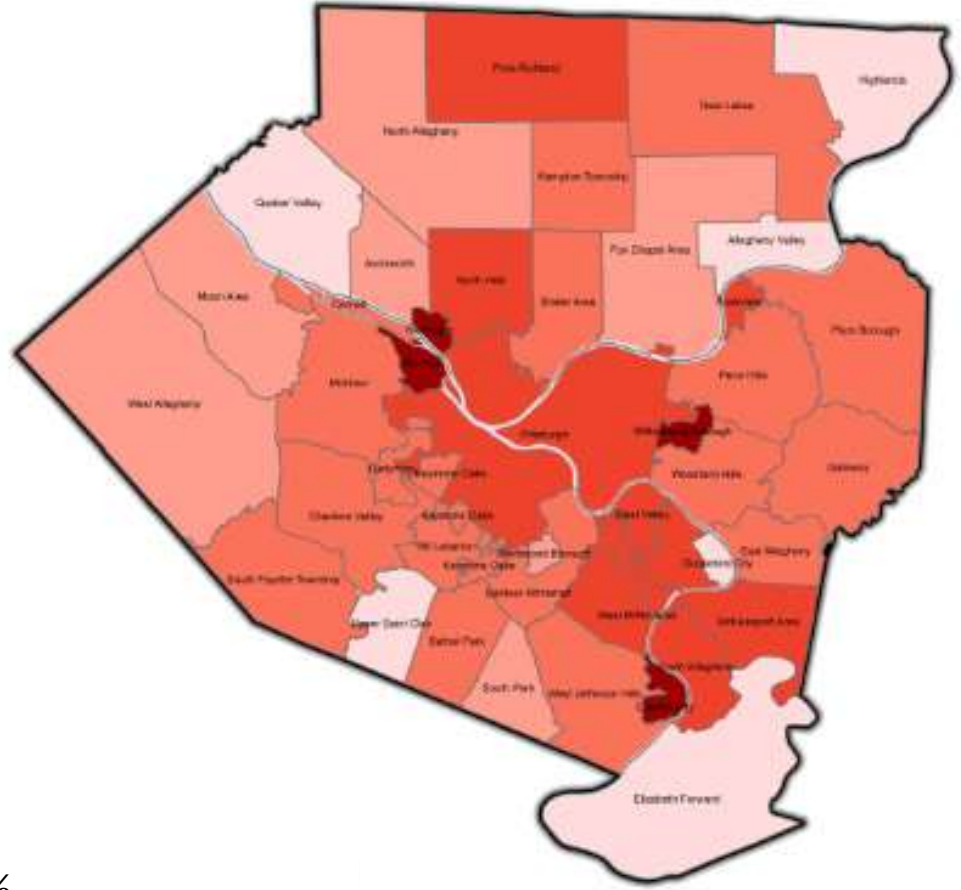
37% of residents don't believe that there is a large selection of fresh fruits and vegetables within their neighborhood.

57% of residents reported that there are many opportunities to purchase fast foods within their neighborhood.



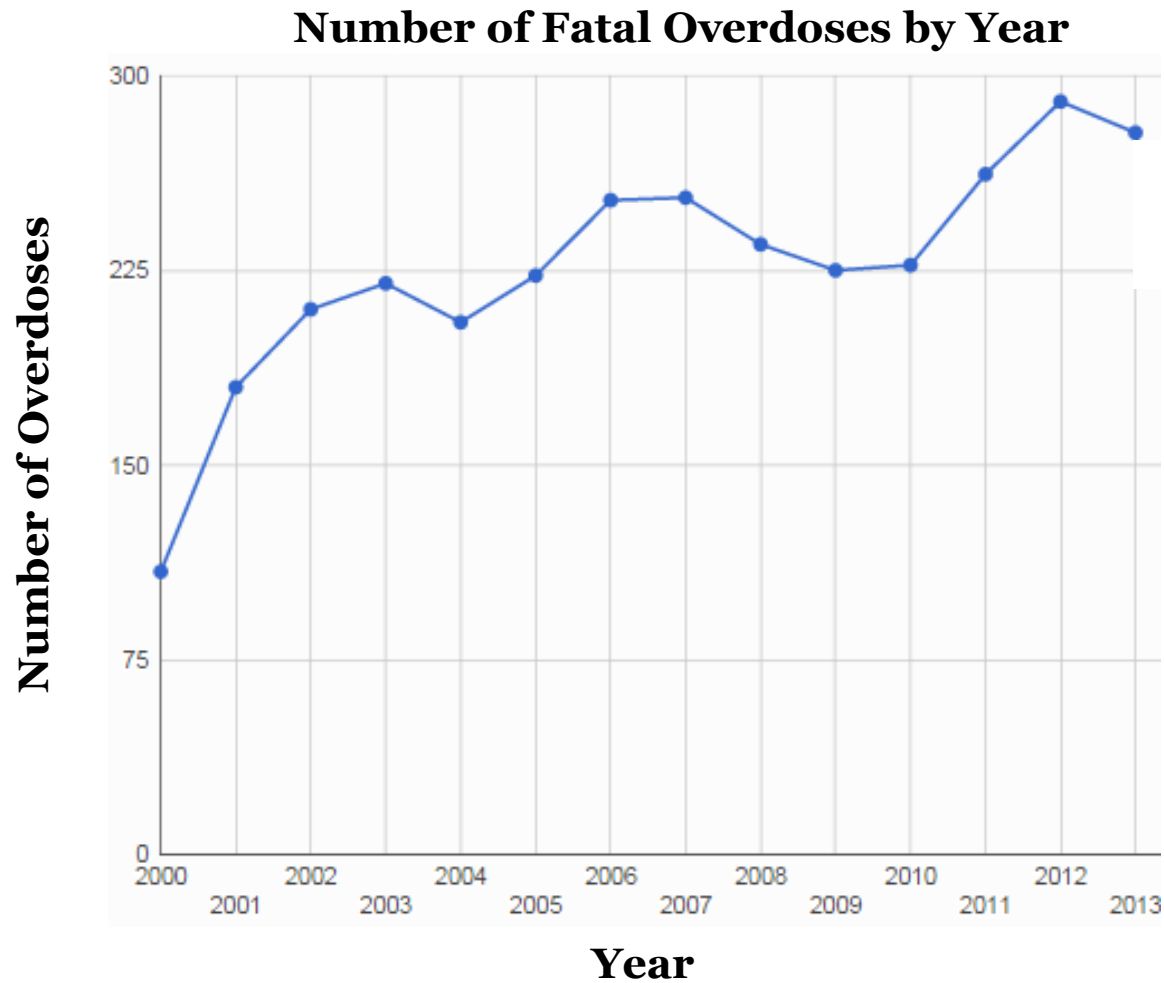


Percent of Allegheny County Children Diagnosed with Asthma by School District, 2011-2012





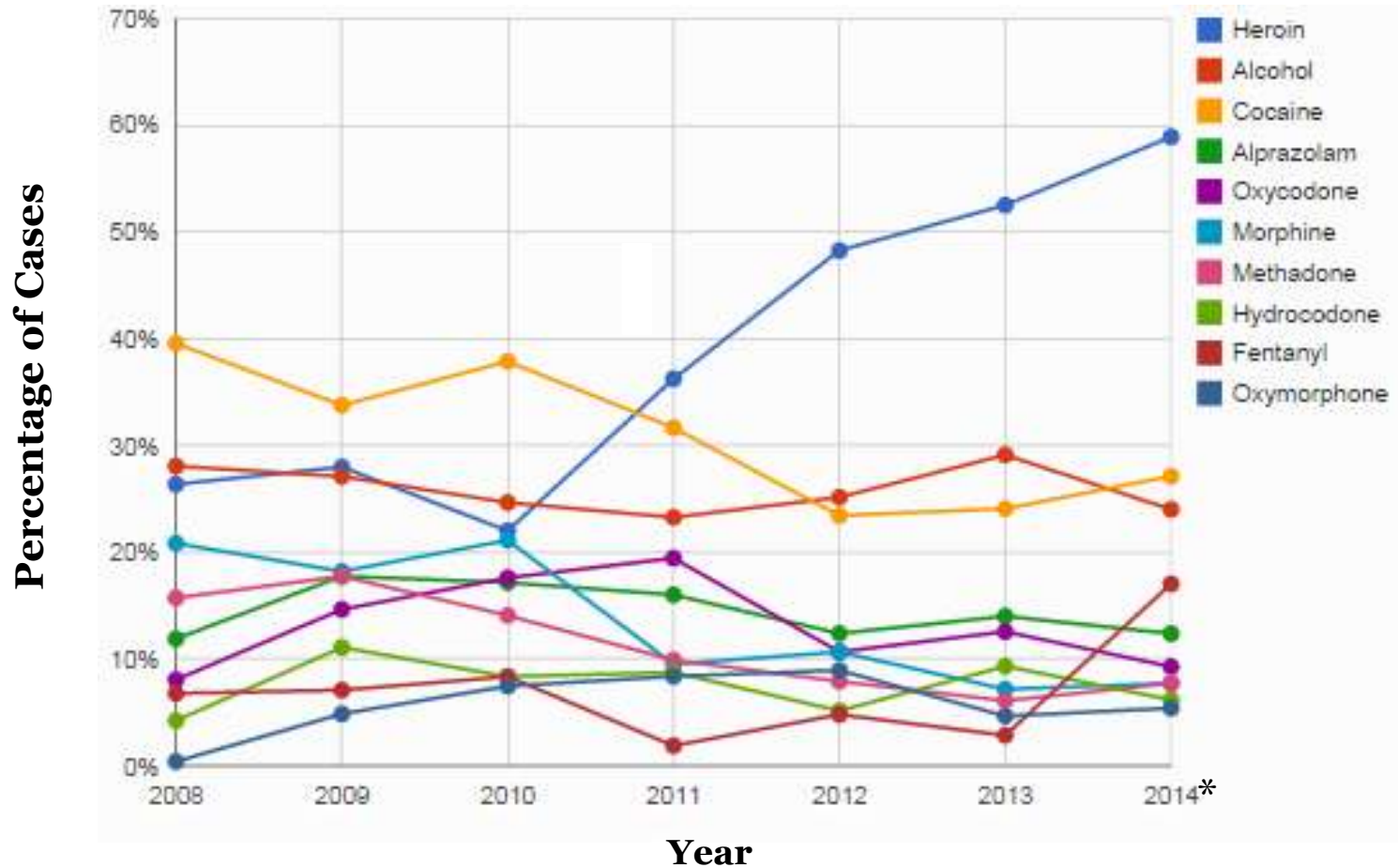
Fatal Overdoses in Allegheny County, 2000-2014





Fatal Overdoses in Allegheny County, 2000-2014

Top 10 Drugs Recorded on Death Certificate



*2014 data reflects only closed cases as of September 3rd

Deaths Due to Accidental Poisoning & Exposure to Noxious Substances in Allegheny County by District, 2007-2011

	Number of Deaths	Median Age at Death	Age-Adjusted Rate
Allegheny County	1,055	39.2	17.2
District 1	44	36.6	9.8
District 2	40	36.2	9.7
District 3	73	45.1	15.4
District 4	95	39.1	19.5
District 5	36	35.9	9.1
District 6	75	38.6	16.9
District 7	88	39.4	19.2
District 8	82	45.4	16.9
District 9	102	45.1	22.2
District 10	85	47.7	21.8
District 11	68	45.3	15.3
District 12	154	38.2	30.6
District 13	112	40.1	24.5

Source: Allegheny County Death Records

District 9 Deaths Due to Accidental Poisoning & Exposure to Noxious Substances by Municipality, 2007-2011

Municipality/ Neighborhood	Number of Deaths	Age-Adjusted Rate
Dravosburg	4	36.2
Duquesne	6	24.1
Elizabeth T.	10	17.3
Forward	2	12.9
Glassport	6	31.2
Liberty	0	-
Lincoln	2	24.3
McKeesport	32	34.9
North Versailles	11	20.2
Port Vue	4	24.7
South Versailles	0	-
Versailles	3	34.9
West Mifflin	19	20.6
White Oak	3	7.7

Source: Allegheny County Death Records

Infant Mortality Rates per 1,000 Live Births in Allegheny County by District, 2007-2011

	Total Population	White	Black
Allegheny County	7.2	4.8	16.4
District 1	4.7	4.4	14.9
District 2	5.0	5.1	19.6
District 3	4.8	4.9	11.4
District 4	8.8	6.5	25.0
District 5	4.3	4.6	-
District 6	4.8	3.3	17.4
District 7	7.6	5.0	15.0
District 8	7.2	4.1	16.3
District 9	8.4	6.4	12.5
District 10	14.7	5.7	19.5
District 11	6.0	3.2	14.8
District 12	7.3	3.6	20.3
District 13	7.6	5.0	10.6

Source: Allegheny County Birth Records

Pregnancy Factors and Outcomes for District 9 by Municipality, 2010

	Percent Received First Trimester Care	Percent Smoked While Pregnant	Percentage of Births with Low Birth Weight
Allegheny County	93.0%	18.2%	8.1%
Dravosburg	100.0%	21.4%	-
Duquesne	92.4%	35.7%	22.3%
Elizabeth Township	93.6%	19.4%	8.9%
Forward	100.0%	19.2%	3.8%
Glassport	95.7%	34.0%	6.4%
Liberty	93.3%	11.8%	5.9%
Lincoln	87.5%	22.2%	-
McKeesport	90.8%	32.8%	14.9%
North Versailles	96.1%	22.4%	8.6%
Port Vue	91.7%	16.0%	8.0%
South Versailles	100.0%	-	20.0%
Versailles	85.7%	20.0%	-
West Mifflin	95.2%	22.2%	10.1%
White Oak	93.0%	11.9%	5.1%

* Cannot be reported

Source: Allegheny County Birth Records

Homicide Deaths in Allegheny County by District, 2007-2011

	Rate per 100,000	Median Age of Death
Allegheny County	7.9	27.7
District 1	0.5	20.0
District 2	0.5	55.0
District 3	2.1	42.5
District 4	4.6	32.8
District 5	0.6	50.0
District 6	4.0	34.2
District 7	9.2	31.1
District 8	7.1	24.7
District 9	14.1	27.2
District 10	24.6	26.6
District 11	7.6	25.8
District 12	10.4	27.5
District 13	12.9	25.4